

Welcome

Actionable Intelligence for Social Policy (AISP)

School of Social Policy & Practice

University of Pennsylvania



Dennis Culhane

Co-founder & Faculty Director

(No slides)



Sally Bachman

Dean, School of Social Policy & Practice (SP2)

(No slides)



Della Jenkins
Executive Director





**Helping state and
local governments
collaborate and
responsibly use
data to improve
lives.**

LEARN MORE →

www.aisp.upenn.edu

AISP'S Role



We are:

Data evangelists

Connectors, community builders,
thought partners, cheerleaders,
and data sharing therapists

Focused on ethical data use
for policy change

We are not:

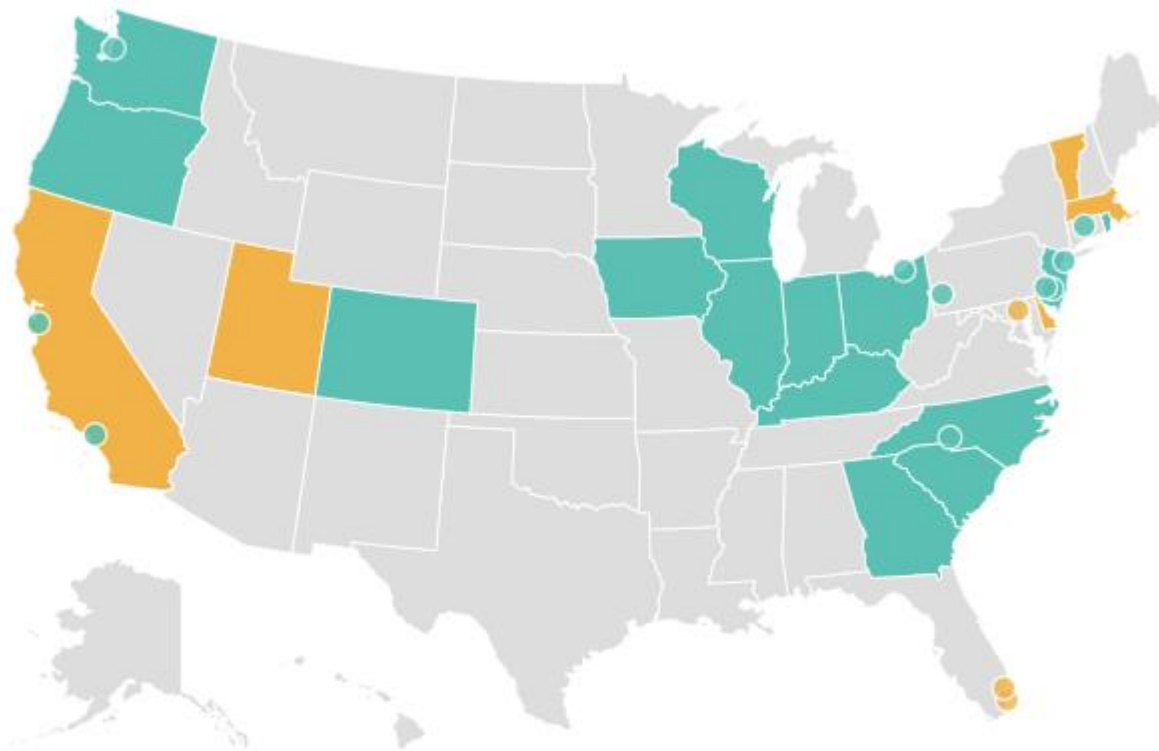
Data holders or intermediaries

A vendor or vendor recommender

Focused on academic research

Our Network & Learning Community

- Network of 22 operational state and local integrated data systems
- Between our three Learning Community cohorts and other sites we support, 14 more sites well on their way



When we talk about IDS, what do we mean?

- We're talking about people, not tech solutions
- Efforts that link administrative data across domains/agencies
- Efforts that curate data that are relevant and high quality
- Efforts that serve as a public utility (not research for research's sake)
- Efforts that have defined governance structures (data only used for approved uses)



What we do

Peer Network

Guidance & Standards

Training & Consulting

Advocacy & Communications

Actionable Research

Our approach

Data sharing is as relational
as it is technical.



We don't just need to integrate data;
we need to integrate people.

Which brings us here :)

Agenda at a Glance

JUNE 21

10:00am–1:00pm	National Advisory Committee (invite only) <i>Drafting Room</i>
1:00–2:00pm	Network meeting check-in & lunch <i>Pre-Function + Patio</i>
2:00–3:30pm	Welcome, AISP updates & agenda preview <i>Banquet Salon</i>
3:30–5:00pm	Plenary 1: Centering racial equity in cross-agency data collaborations <i>Banquet Salon</i>
5:00–7:00pm	Celebrating our community & network reception <i>Banquet Salon, Pre-Function + Patio</i>

JUNE 22

8:30–9:00am	Breakfast, <i>Pre-Function + Patio</i>
9:00a–9:05am	Welcome <i>Banquet Salon</i>
9:05–10:20am	Plenary 2: Integrating data to evaluate policy experiments and drive economic mobility <i>Banquet Salon</i>
10:20–10:30am	Break
10:30am–12:00pm	Concurrent Network presentations (pick 1) 1a, Integrating data to improve education & youth wellbeing <i>Banquet Salon</i> 1b, Integrating data to address housing insecurity <i>Drafting Room</i>
12:00–1:00pm	Lunch <i>Pre-Function + Patio</i>

Agenda at a Glance

1:00–2:30pm

Concurrent Network presentations (pick 1)

2a, Integrating data to improve health
& health equity
Banquet Salon

2b, Integrating data to promote early
childhood outcome
Drafting Room

2:30–3:00pm

Break

3:00–4:30pm

Plenary 3:
Evolving legal frameworks for data integration
Banquet Salon

4:30–5:00pm

Closing reflections

JUNE 23

8:15–8:45am

Breakfast, *Studio 3 + Patio*

8:45–9:45am

Morning break out discussions (pick 1)

Collaborative research opportunities
Drafting Room 1

Legal approaches & problem-solving
Drafting Room 2

9:45–10:00am

Break

10:00am–12:00pm

Legal Advisory Workgroup (invite only)
Studio 3

10:00–11:15am

Plenary 4:
Key topics in privacy-preserving technologies:
What is PPT and how can it support integrated
data sharing efforts?
Drafting Room

11:15am–12:00pm

Data Talks
Drafting Room

12:00–1:00pm

Grab-n-go Lunch

Agenda

- AISP Updates
- Plenary 1: Centering racial equity in cross-agency data collaborations
- Network Reception & Awards!

AISP Updates

Growing network connections

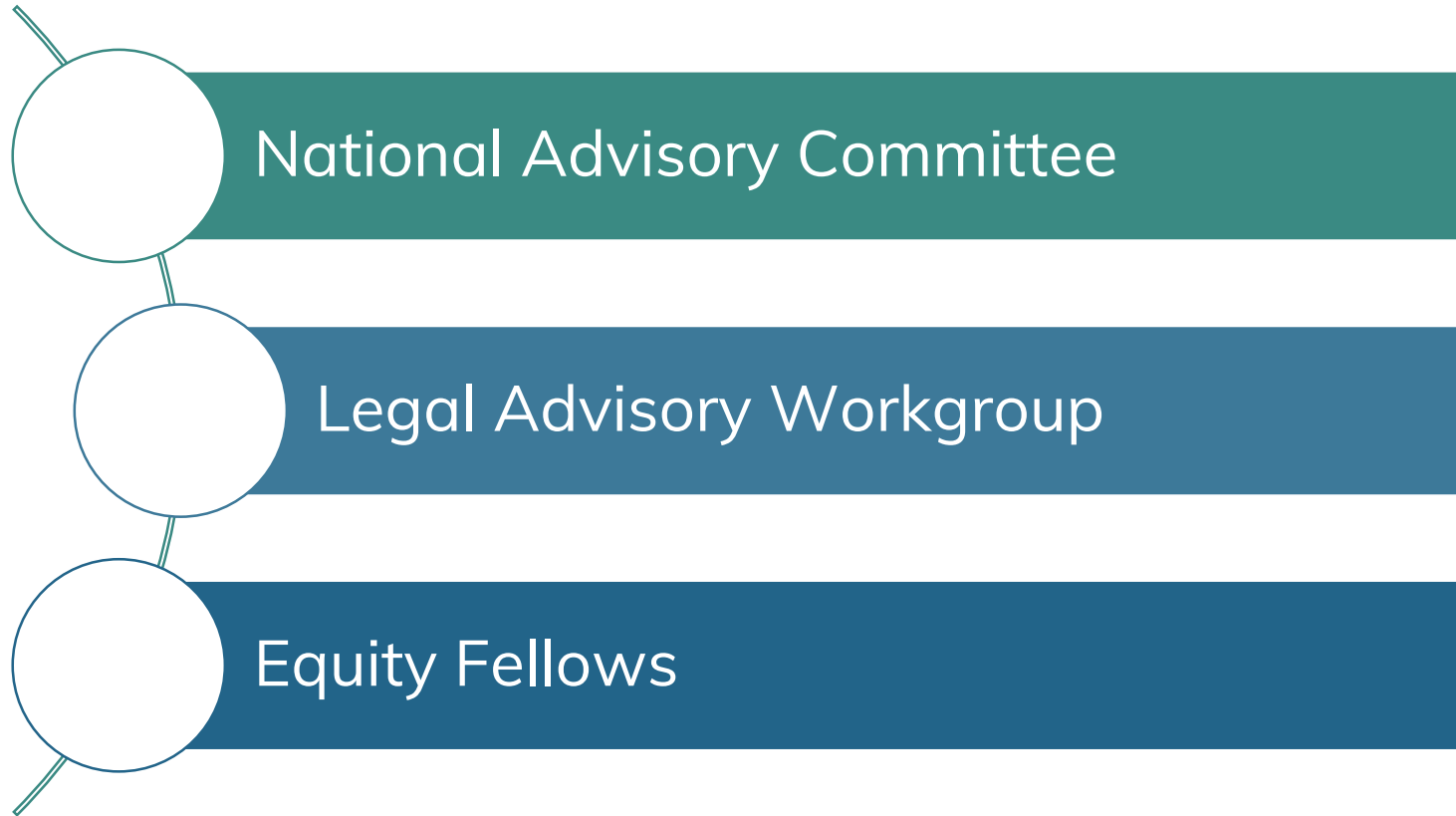
Who are we these days? 36 Network members and growing!

What have we been doing?

We've:

- Held 35 Network calls in the last 3 years
- Co-authored papers together
- Done collaborative presentations
- Shared our deepest, darkest data-sharing fears (and hopefully sometimes provided the antidote)
- Cheered on new grants, legal agreements, analysis and insights
- Sent & received approximately 5 million emails
- And highlighted all of it in a monthly newsletter!

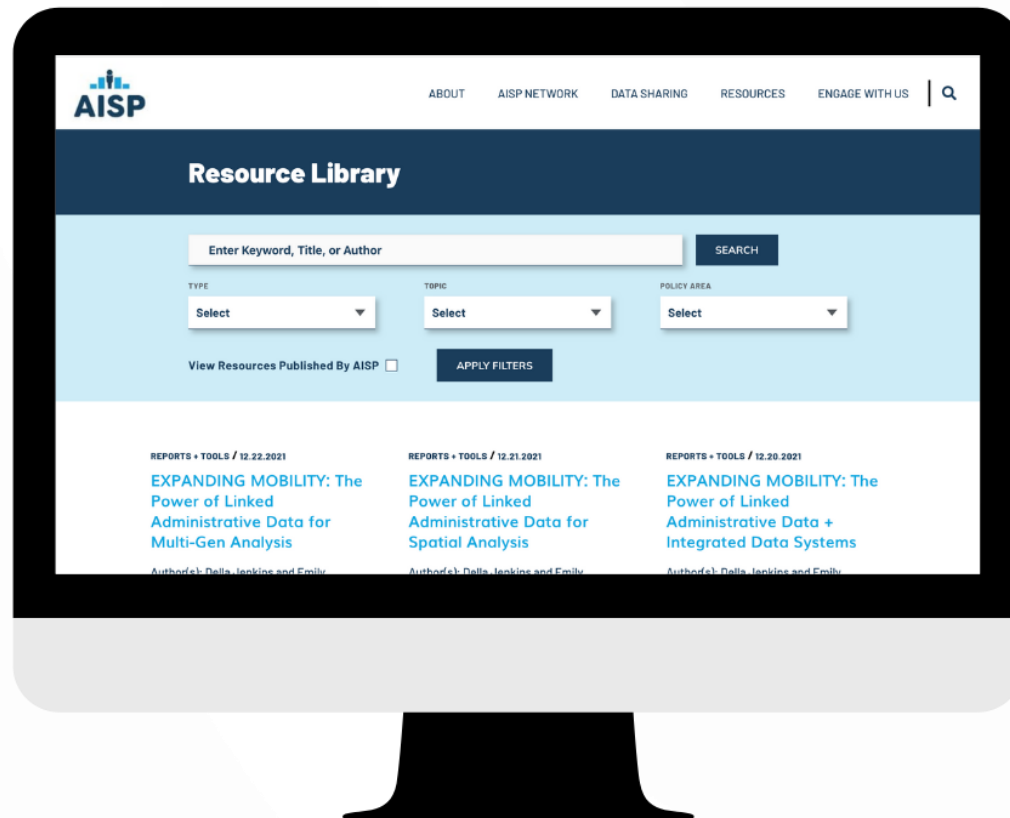
Growing the organization



Growing the team



Communications

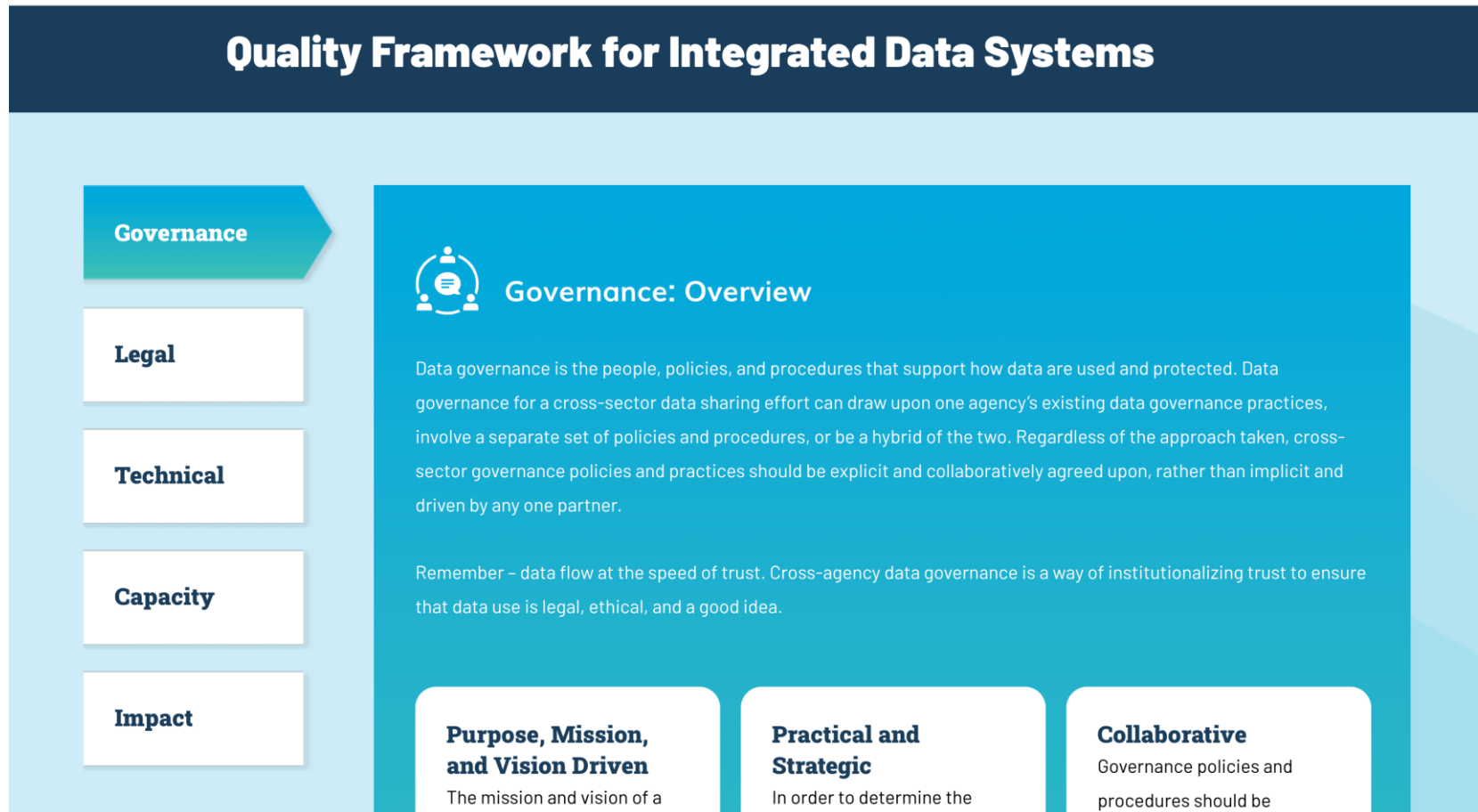


@AISP_Penn

www.aisp.upenn.edu

Subscribe to our newsletter: <https://bit.ly/signupAISPnewsletter>

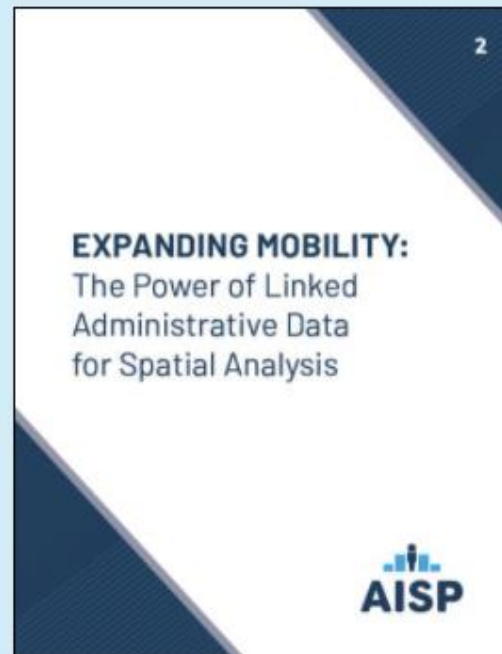
Quality Framework for IDS



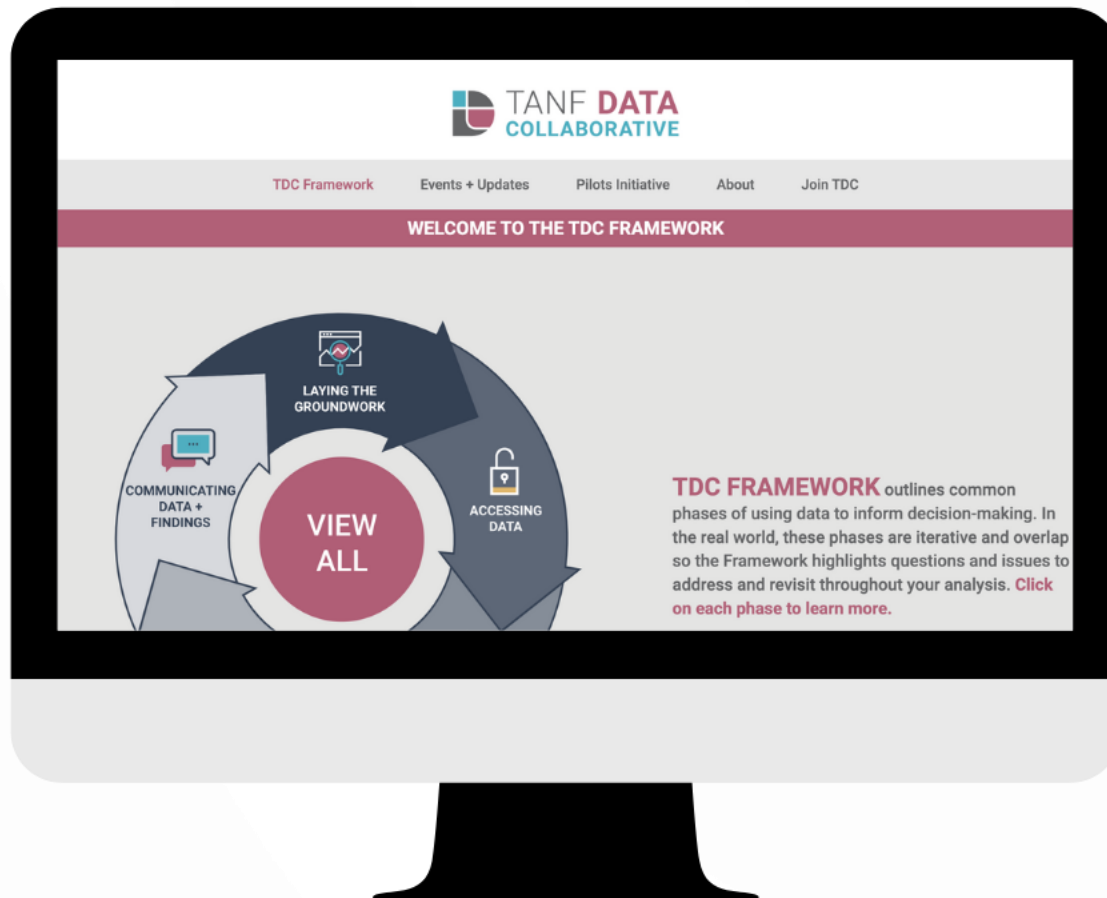
Economic Mobility

Explore Our Three-Part Series

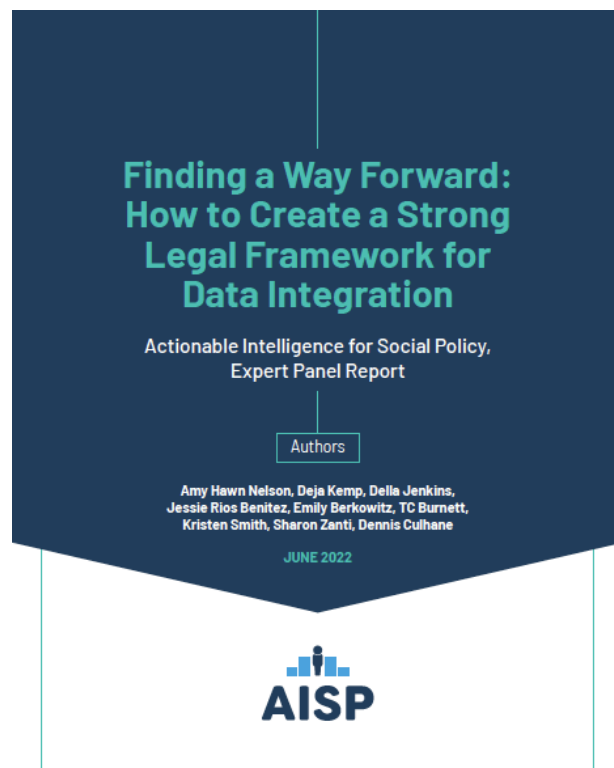
Each report provides conceptual framing, examples of “work in action,” and recommendations for research and practice. This series was developed based on findings from our latest national survey of data integration efforts across the US, interviews and expert working group meetings, and from more than a decade of working with and learning alongside our Network and Learning Community Sites.



Federal Projects



Legal Guidance



Data Landscaping & Consultation

Requested Data Output

The type of data output may depend upon both the use case and the role of the requestor. A **data use agreement may be necessary for any of the following request types**, including aggregate data, for example, if small numbers are not suppressed.

What is your requested data output?

Questions? Contact dataoffice@dhhs.nc.gov

1. Aggregate

- A. Aggregated data counts by specified subgroup / population / geography from a single Division/Office
- B. **Linked and** aggregated data by specified subgroup / population / geography from multiple Divisions/Offices

2. Row level

- A. Row level data that has been de-identified
- B. Row level data with identifiers
- C. Underlying source data that has not been curated or manipulated (e.g. for data management or audit purposes)

3. Integrated Row level

- A. Row level data without identifiers, linked with another data source **owned** by NCDHHS **linked within** NCDHHS data infrastructure
- B. Row level data with identifiers to link with another data source **owned** by NCDHHS **linked within** NCDHHS data infrastructure
- C. Row level data with identifiers to link with another data source **owned** by NCDHHS **linked outside** of NCDHHS data infrastructure



NC DEPARTMENT OF
HEALTH AND HUMAN SERVICES

Data Sharing Guidebook
May 2022

Centering Racial Equity

[ABOUT](#)[AISP NETWORK](#)[DATA SHARING](#)[RESOURCES](#)[ENGAGE WITH US](#)

Centering Racial Equity

A Toolkit for Centering Racial Equity Throughout Data Integration

Cross-sector data sharing and integration transform information about individuals into actionable intelligence that can be used to understand community needs, improve services, and build stronger communities. Yet, use of cross-sector data can also reinforce legacies of racist policies and produce inequitable resource allocation, access, and outcomes.

Since 2019, AISP has led a diverse workgroup of civic data stakeholders to co-create strategies and identify best practices to center racial equity in data integration efforts.

[ABOUT](#)[AISP NETWORK](#)[DATA SHARING](#)[RESOURCES](#)[ENGAGE WITH US](#)

Equity in Practice Learning Community

Training & Technical Assistance Program to Center Racial Equity in Data Integration

Cross-sector data sharing and integration can transform data about individuals into actionable information that can be used to build stronger, healthier and more just communities. At the same time, cross-sector data can reinforce legacies of racist policies and lead to inequitable resource allocation, access, and outcomes.

AISP's Equity in Practice Learning Community is designed to help data sharing efforts implement and build on the promising practices identified in our [Toolkit for Centering Racial Equity in Data Integration](#). Together, we aim to create a new kind of data infrastructure that shares power and knowledge with communities.

