



Equity in Practice 2024 Update

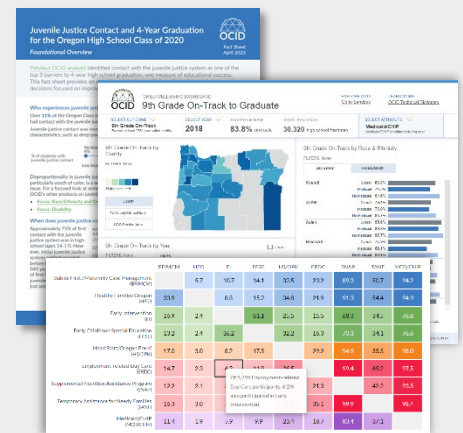
Oregon Child Integrated Dataset

The Oregon Child Integrated Dataset (OCID) is administered by the Center for Evidence-based Policy at Oregon Health and Science University. The project brings together public program and service data from 5 state agencies to assist policy and community leaders in grounding their decisions in actionable, timely and relevant information to improve outcomes for Oregon children and families. OCID data builds shared understanding about child well-being among Oregon state leaders, policymakers, and diverse groups of community partners. For an update on the project's progress during the 2021-2023 biennium as well as current OCID project priorities, please see the OCID [Project Overview](#).

In 2024, OCID built an equity and engagement strategy to increase connections and use of the data, incorporate community voice, and embed equity practices into OCID analyses and products.

OCID Policy Resources: Timely, Relevant, and Specific to Oregon

- Original [analyses](#) aim to address policy research questions critical for improving health and well-being of all Oregon High School children. OCID policy briefs provide new insight into groups of youth who experience public programs and supports, as well as rigorous statistical analysis to illuminate relationships between characteristics and outcomes.
- [Interactive displays](#) are companions to OCID analyses and provide thematic exploration of specific populations and outcomes to identify interactions, patterns, and trends with state programs and services data.
- The [Child Well-being Dashboard](#) allows investigation of education, health, and social service indicators of child well-being over time and across an array of attributes including equity considerations, birth characteristics, geography, and program participation.



Equity in Practice



In 2023 and 2024, the OCID team participated, in partnership with Oregon's State Data Officer, in the [Equity in Practice Learning Community](#) through Actionable Intelligence for Social Policy (AISP) at the University of Pennsylvania.

The OCID team developed a preliminary framework to guide equity and engagement considerations throughout the phases of OCID analyses. These phases represent key decision points that can impact the trajectory of an analysis.

This working framework was adapted from the [data life cycle model used by AISP](#) to reflect the OCID project life cycle and to identify opportunities for engagement at each phase of work.

OCID Equity and Engagement Goals

The following 4 goals are guiding OCID equity and engagement efforts:

- ◆ Gather, analyze, and share data to inform policy decisions, highlighting possible disparities, inequities, assets, and opportunities within our systems.
- ◆ Embed equity practices into OCID analyses and products, including:
 - Racial Equity.** Build an understanding and apply lessons learned around the best practices for cross-sector data reuse and public reporting that center racial equity.
 - Intersectionality.** Highlight the intersections of race/ethnicity, sex/gender, disability status, geography, and other forms of identity.
 - Inclusive Knowledge Integration.** Develop capacity to integrate diverse perspectives and information sources into our research and explore different approaches to disaggregating data.
 - Bidirectionality.** Build capacity to learn from and effectively share information with those who have learned and lived experience in the topics analyzed by the OCID project.
 - Transparency.** Commit to transparency about OCID governance processes, methodologies, resources, timelines, and limitations.
- ◆ Ensure reporting from OCID is meaningful and actionable to policymakers and organizations.
- ◆ Include community perspectives in OCID analyses.

Equity and Engagement Lessons Learned

The following 5 key lessons shaped the development of the project's equity and engagement framework:

- ◆ Equity-centered engagement takes time and careful planning.
- ◆ The use of administrative data presents both opportunities and limitations.
- ◆ Engagement is most effective when it is sustainable, meaningful, and mutually beneficial.
- ◆ Identity is complex and requires responsive and innovative analytic approaches.
- ◆ The way that OCID data is reported has implications for equity.

For more on OCID's equity and engagement lessons learned, goals, and developing framework, please see the [OCID Developing Equity and Engagement Strategy](#).

On the Horizon

- ◆ Implementing a robust equity and engagement review process throughout the project's work, during which findings based on identity characteristics, the policy landscape, and historical context are routinely discussed at critical stages throughout each analysis.
- ◆ Working with diverse thought partners to explore ways of disaggregating OCID data by race/ethnicity, sex/gender, geography, disability status, and additional forms of identity, to lend new insights into the trends and outcomes of different subgroups of Oregon children.
- ◆ Continuous learning to improve structural and cultural approaches to data equity and analysis.